

# HOME PLASTIC BINGO

*Go on a scavenger hunt around your home and see how many boxes you can check off!*

1



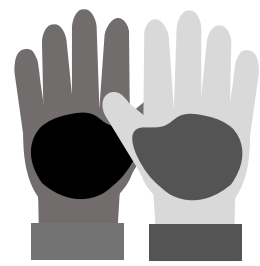
PLASTIC THAT YOU  
EAT OUT OF

2



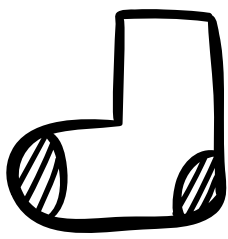
PLASTIC THAT YOU  
CAN SEE THROUGH

3



PLASTIC THAT YOU  
WEAR

4



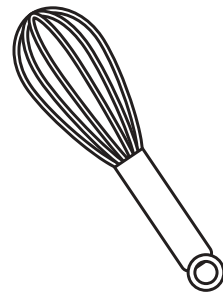
PLASTIC THAT GOES  
ON YOUR FEET

5



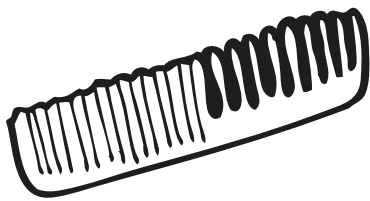
PLASTIC WITH  
SOMETHING  
SMELLY INSIDE

6



SOMETHING  
PLASTIC IN THE  
KITCHEN

7



SOMETHING  
PLASTIC IN THE  
BATHROOM

8



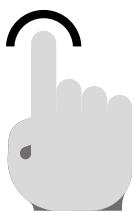
SOMETHING  
PLASTIC SMALLER  
THAN YOUR PINKY

9



PLASTIC ON YOUR  
WALL

10



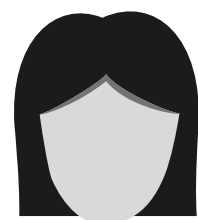
SOMETHING  
PLASTIC THAT  
TURNS ON

11



PLASTIC WITH 3  
DIFFERENT  
COLOURS

12



PLASTIC THAT IS  
BIGGER THAN YOUR  
HEAD!

# HOME PLASTIC BINGO

*In each numbered space, write or draw the items that you found around your home to match each clue*

1	2	3
4	5	6
7	8	9
10	11	12